

# Toggle Switch



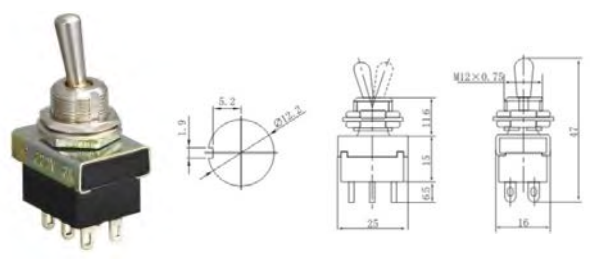
Rating : 10A 125VAC ; 6A 250VAC / 15A 125VAC ; 10A 250VAC / 20A 125VAC ; 15A 250VAC  
 Contact Resistance: 50m Ω max  
 Insulation Resistance: 500VDC 1000M Ω min

Dielectric Strength: 1500VAC, 1 Minute  
 Operating Temperature: -25°C~ +85°C  
 Electrical Life: ≥ 10,000 Cycles

**TOPTTEK®**  
 HARDWARE ELECTRONIC MANUFACTURER

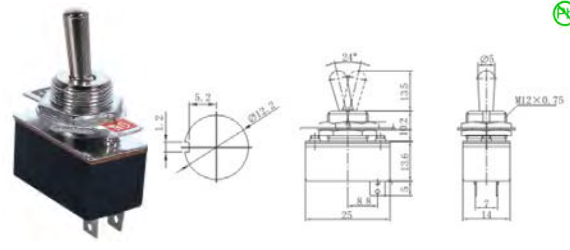


## T3-3A



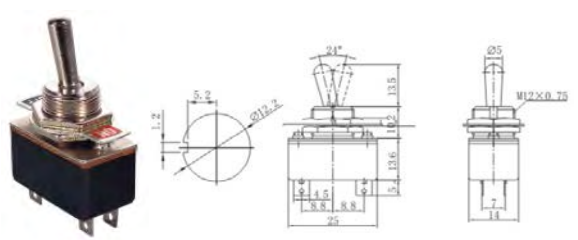
T3-3A ON-ON  
 DPDT 6P  
 6A 125VAC; 3A 250VAC

## T3-1



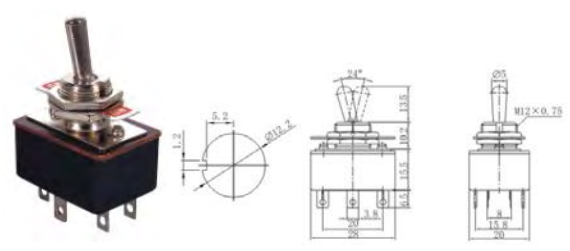
T3-1 ON-OFF  
 SPST 2P  
 4A 125VAC; 2A 250VAC

## T-3-2



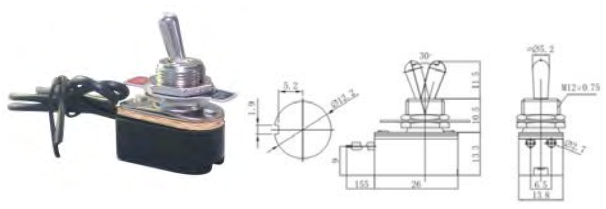
T-3-2 ON-ON  
 SPDT 4P  
 4A 125VAC; 2A 250VAC

## T-3-3



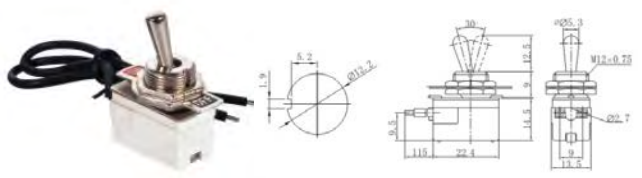
T-3-3 ON-ON  
 DPDT 6P  
 5A 125VAC; 3A 250VAC

## TS-1



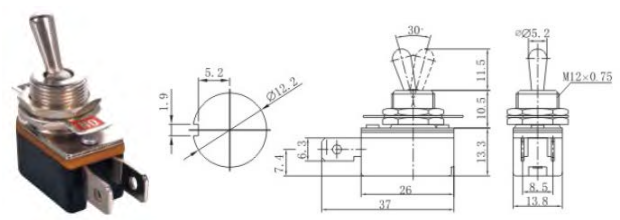
TS-1 ON-OFF  
 SPST 2P  
 6A 125VAC; 3A 250VAC; 10A 12VDC

## TS-2



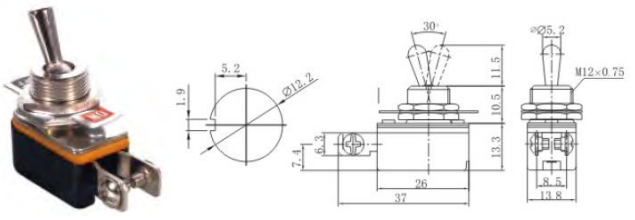
TS-2 ON-OFF  
 SPST 2P  
 6A 125VAC; 3A 250VAC; 10A 12VDC

## TH-1



TH-1 ON-OFF  
 SPST 2P  
 6A 125VAC; 3A 250VAC; 10A 12VDC

## TH-1S



TH-1 ON-OFF  
 SPST 2P (Screw Terminals)  
 6A 125VAC; 3A 250VAC; 10A 12VDC

14  
 \*  
 33

